



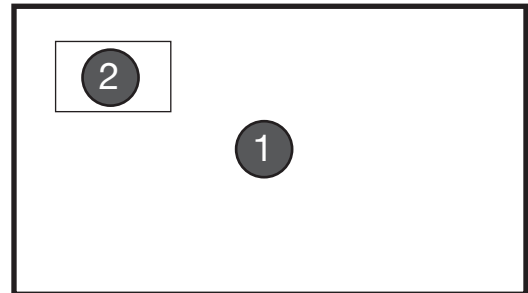
## 55" 4K Rugged Monitor

Open front, even-bezel, aluminum housed 4K monitor that is quick and easy to setup and offers advanced features:

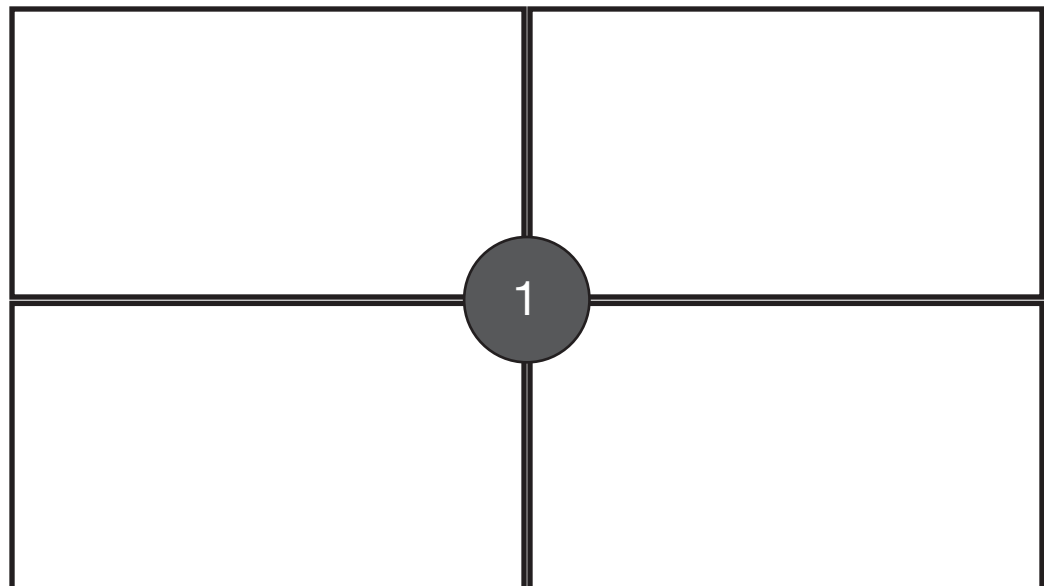
- HDMI, DisplayPort, DVI input
- Picture-in-Picture & Quad view
- Video wall function integrated
- Option: Secure remote connection, video & commands

Picture-in-Picture: Supports main & secondary input

Input video  
 - HDMI x 2  
 - Displayport  
 - DVI-I



**Video wall function,** accepts a single video input up to 4K resolution and scales it across all monitors. No external video wall controller is required.



## Specification

<b>Display Type:</b>	55" TFT, LED Backlit
<b>Display Resolution:</b>	3840 x 2160 (4K, Ultra-HD)
<b>Aspect Ratio:</b>	16:9
<b>Brightness:</b>	500 nit (cd/m2)
<b>Contrast:</b>	4000:1
<b>Colors:</b>	1.06 Billion, 72% NTSC
<b>Response Time:</b>	8.5ms typical
<b>Display surface:</b>	Anti glare, 3H
<b>Video Inputs:</b>	
<b>HDMI 2.0:</b>	3840x2160 @60Hz
<b>HDMI 1.4:</b>	3840x2160 @30Hz
<b>DisplayPort 1.2:</b>	3840x2160 @60Hz
<b>DVI:</b>	3840x2160 @30Hz
<b>Command interface:</b>	Ethernet, RS-232, IR
<b>User Controls:</b>	Backlight brightness, Input source selection, Bluetooth (option)
<b>Advanced features:</b>	Quad split view, PiP, PBP Daisy chain, video wall mode Remote commands & software

<b>Temperature, operating:</b>	0 to 50°C
<b>Humidity, operating:</b>	20-85% non-condensing
<b>Rated operating lifetime</b>	70,000 hours
<b>Power:</b>	100 - 240VAC 50/60Hz
<b>Size:</b>	48.7" x 27.8"
<b>Thickness:</b>	1.9" no handles or PSU 2.9" with handles, no PSU 3.2" with handles & PSU
<b>Bezel - same each side:</b>	13.7mm
<b>Enclosure:</b>	Aluminum, 2.3mm
<b>Mounting:</b>	VESA 400 x 400mm, M6 Compatible with standard brackets
<b>Orientation:</b>	Portrait or landscape
<b>Display Weight:</b>	54 lbs
<b>Shipping Weight &amp; size:</b>	65 lbs, 53" x 10" x 33"

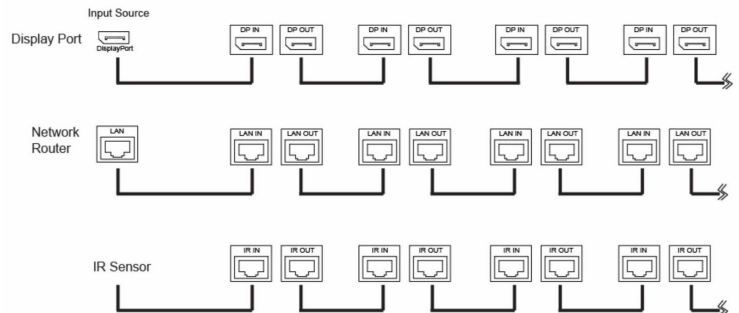
Specifications subject to change without notice

## Order Numbers

55" rugged 4K monitor - 500 nit

P/N: VD-554k5

**Daisy chain:** The daisy chain function enables a single video and control input connection to multiple monitors and the video wall functionality.



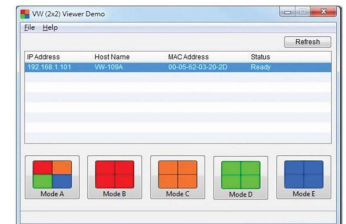
## Volanti Displays

18440 Technology Drive, Suite 130  
Morgan Hill, CA 95037, USA

Call Us On: **+1.408.500.3500**

[www.volantidisplays.com](http://www.volantidisplays.com)

**Video wall software:** The video wall software utility enables remote input and mode selection.



**Remote connection option:** Video & commands connection from up to 300ft.